

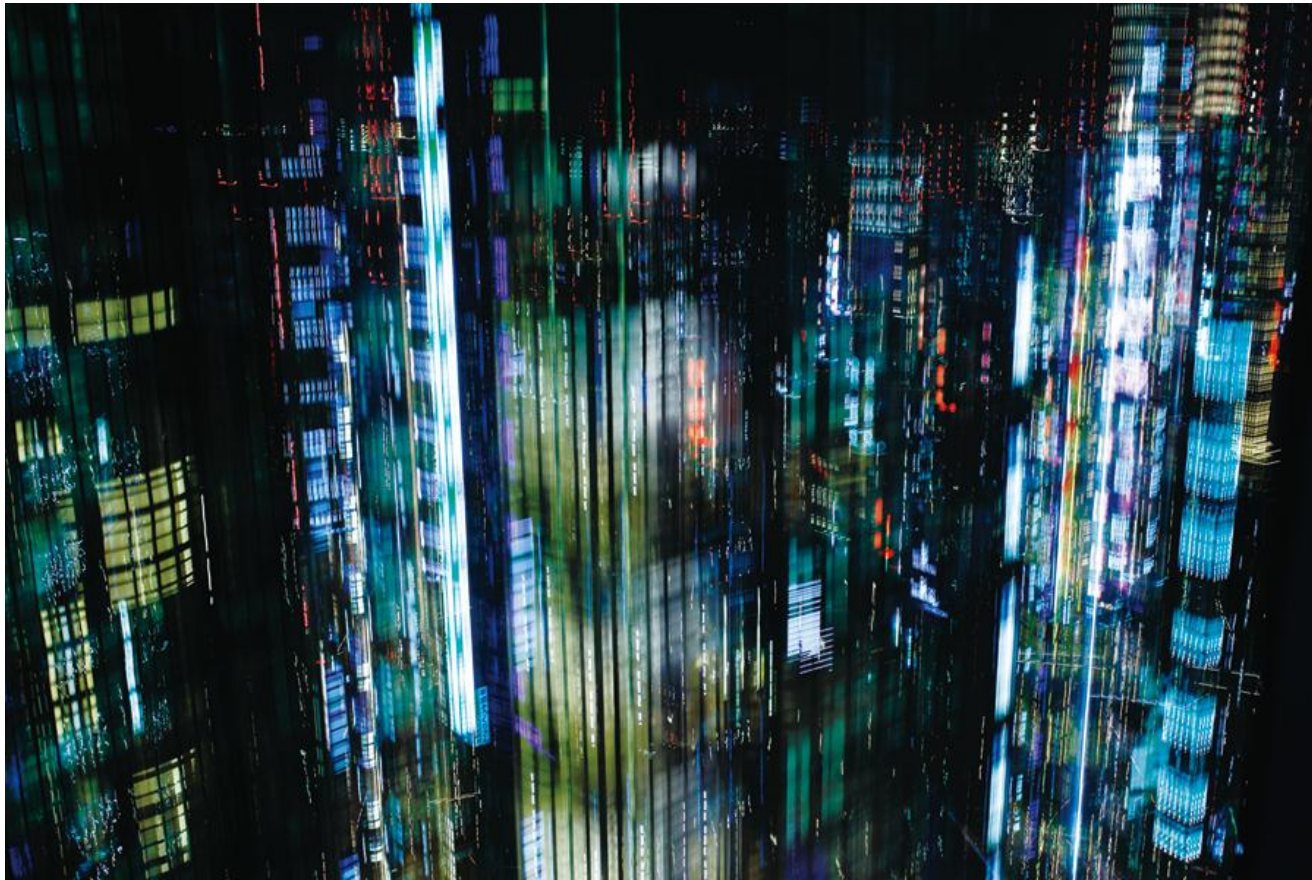
Frantic
Gallery

CATALOGUE OF WORKS

presents

Tokyo Layers

Makoto Sasaki



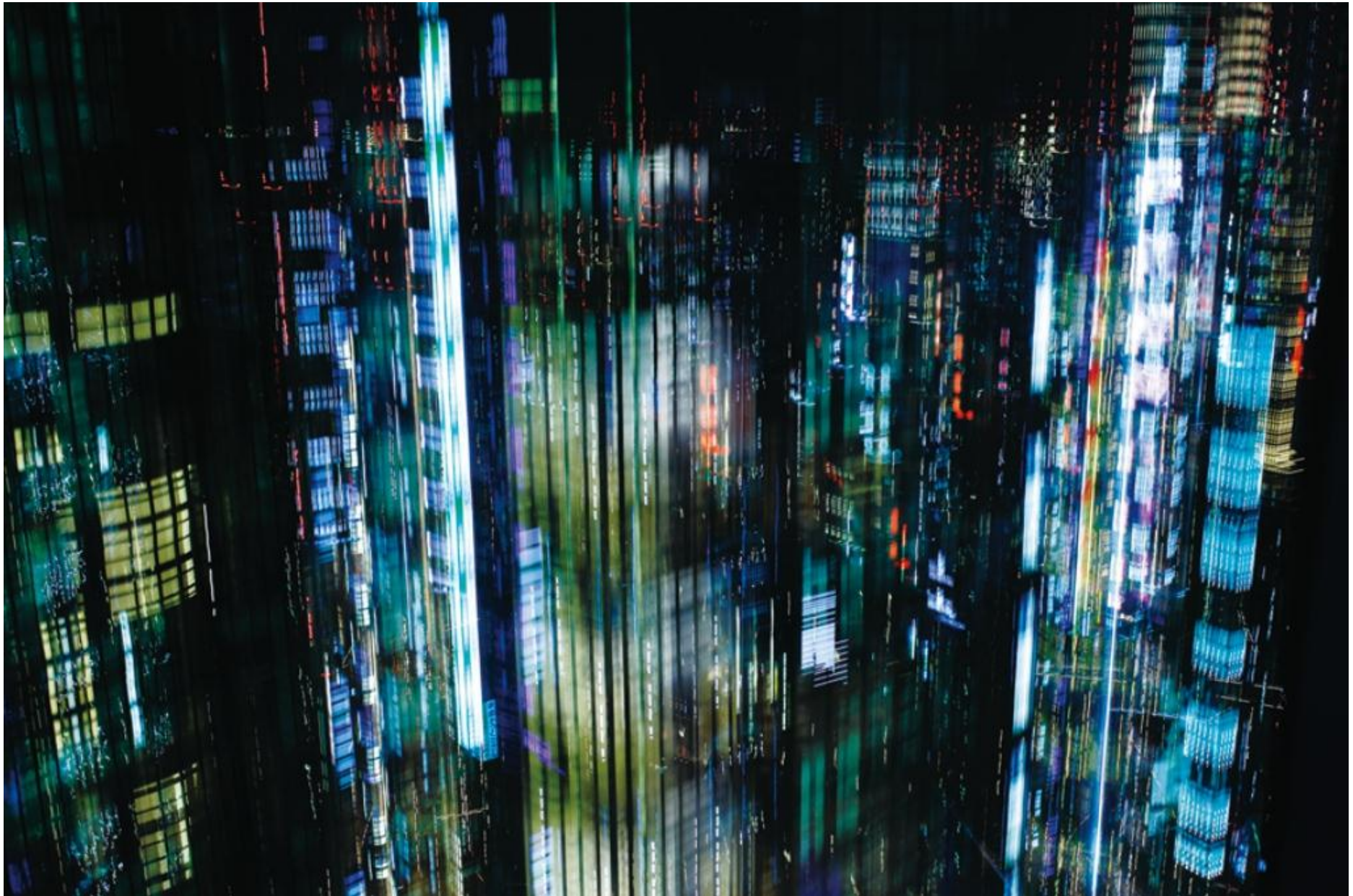
“Tokyo Layers” is the series of photo-images by Makoto Sasaki who sees his Megalopolis as a place of multi-directed and synchronous times. Photo for Sasaki is not a medium for still life, in reverse it is a city-like accumulation of elevated bustling lights and radiating motions.

Sasaki is using a technique of capturing subject with the camera in movement and exposure time of 20-30 seconds, while interrupting the light stream for several times during each shot. Thus extension of light in captured image comes together with its black out, the line absorbs the rhythm, the continuity is overlapped with a rupture. Layers of stretched light that comes from the windows of the city skyscrapers constitute The Tokyo, taking the viewer to the personalized time of its dwellers, the presence of the artist and the moment of the shot.

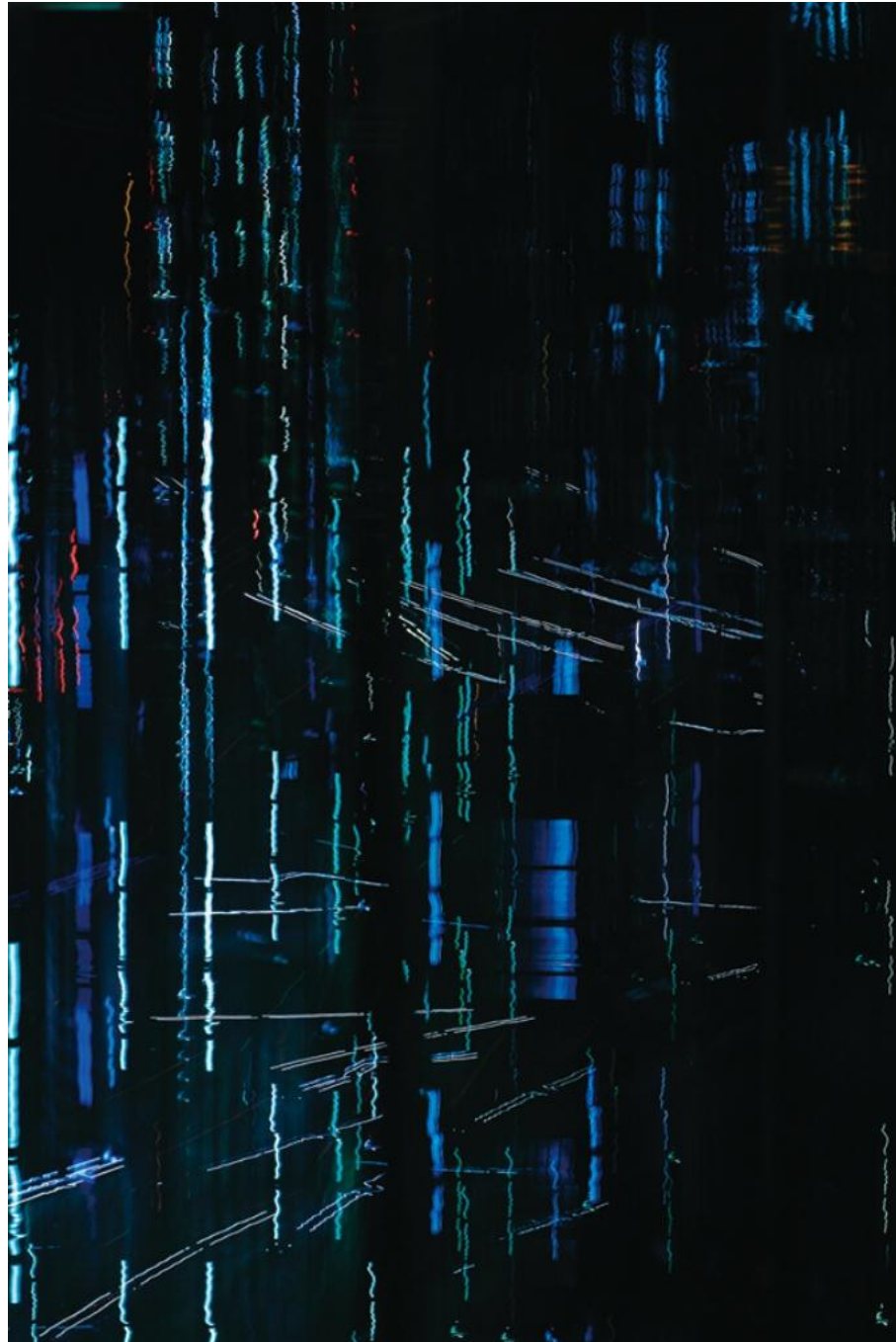
Being completed in one media and without any adjustments on computer works of Sasaki take us in several different directions. Some of them are purely abstract and minimal, showing the possibilities of painterly imaginary in photo. Some of them are sharply graphic and hint on the imaginary of video games and related motion. Others refer to Cyberpunk and Futuristic Gothics with an “urban-ghost” nature and mysticism. “Tokyo Layers” are less the record of the object, but more it’s formal representation: The Picture-City. It is less a photography of Tokyo, but more “Photo as Tokyo”. “Tokyo Layers” strives not to exhibit the transcript of the Metropolis, but to recreate Tokyo’s breathing, it’s existential beat, it’s visualized flow... felt and lived through by Makoto Sasaki.



Tokyo Layers #01, digital c-print / diasec framing, 2011, Ed.10 60x90cm = EUR 2,500 | 100x150cm = EUR 3,900



Tokyo Layers #02, digital c-print / diasec framing, 2011, Ed.10 60x90cm = EUR 2,500 | 100x150cm = EUR 3,900



Tokyo Layers #03, digital c-print / diasec framing, 2011, Ed.10 60x90cm = EUR 2,500 | 100x150cm = EUR 3,900



Tokyo Layers #04, digital c-print / diasec framing, 2011, Ed.10 60x90cm = EUR 2,500 | 100x150cm = EUR 3,900



Tokyo Layers #05, digital c-print / diasec framing, 2011, Ed.10

60x90cm = EUR 2,500 | 100x150cm = EUR 3,900



Tokyo Layers #06, digital c-print / diasec framing, 2011, Ed.10

60x90cm = EUR 2,500 | 100x150cm = EUR 3,900



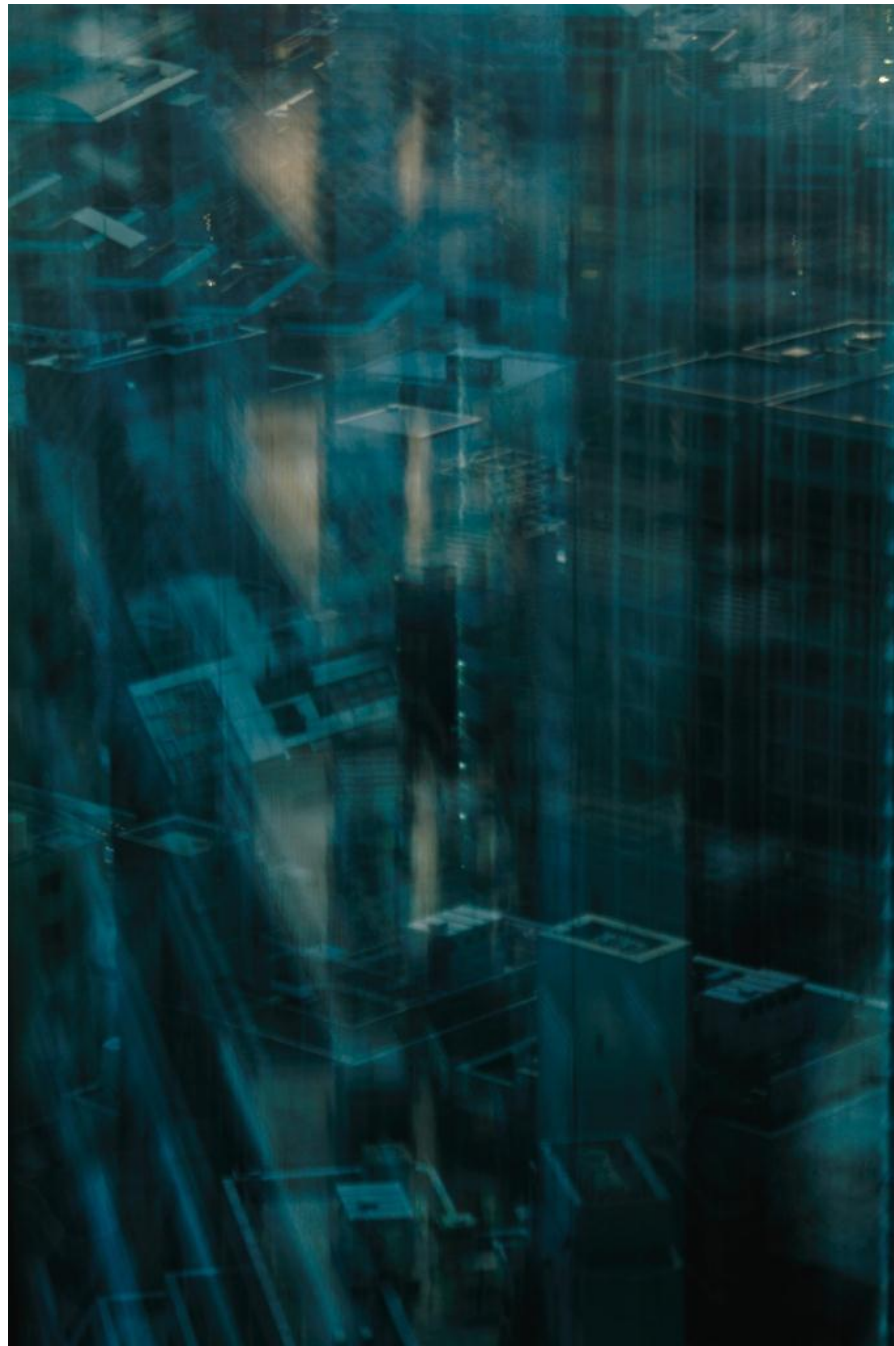
Tokyo Layers #07, digital c-print / diasec framing, 2011, Ed.10

60x90cm = EUR 2,500 | 100x150cm = EUR 3,900



Tokyo Layers #08, digital c-print / diasec framing, 2011, Ed.10

60x90cm = EUR 2,500 | 100x150cm = EUR 3,900



Tokyo Layers #09, digital c-print / diasec framing, 2011, Ed.10

60x90cm = EUR 2,500 | 100x150cm = EUR 3,900



Tokyo Layers #10, digital c-print / diasec framing, 2011, Ed.10

60x90cm = EUR 2,500 | 100x150cm = EUR 3,900



Ttokyo Layers #11, digital c-print / diasec framing, 2011, Ed.10

60x90cm = EUR 2,500 | 100x150cm = EUR 3,900



Tokyo Layers #12, digital c-print / diasec framing, 2011, Ed.10

60x90cm = EUR 2,500 | 100x150cm = EUR 3,900



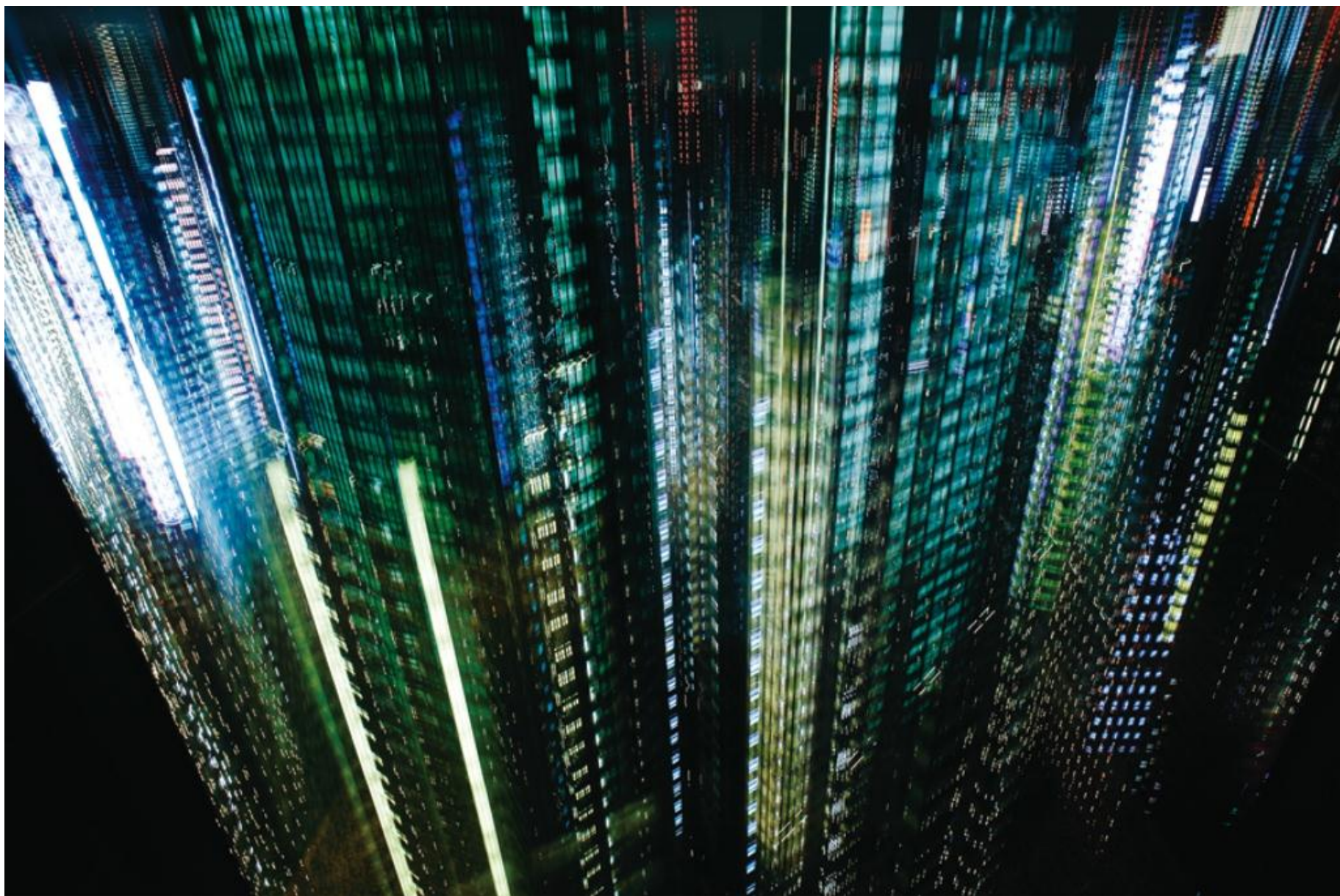
Tokyo Layers #13, digital c-print / diasec framing,, 2011, Ed.10

60x90cm = EUR 2,500 | 100x150cm = EUR 3,900



Tokyo Layers #14, digital c-print / diasec framing, 2011, Ed.10

60x90cm = EUR 2,500 | 100x150cm = EUR 3,900



Tokyo Layers #15, digital c-print / diasec framing, 2011, Ed.10

60x90cm = EUR 2,500 | 100x150cm = EUR 3,900



Tokyo Layers #16, digital c-print / diasec framing, 2011, Ed.10 60x90cm = EUR 2,500 | 100x150cm = EUR 3,900



Tokyo Layers #17, digital c-print / diasec framing, 2011, Ed.10

60x90cm = EUR 2,500 | 100x150cm = EUR 3,900



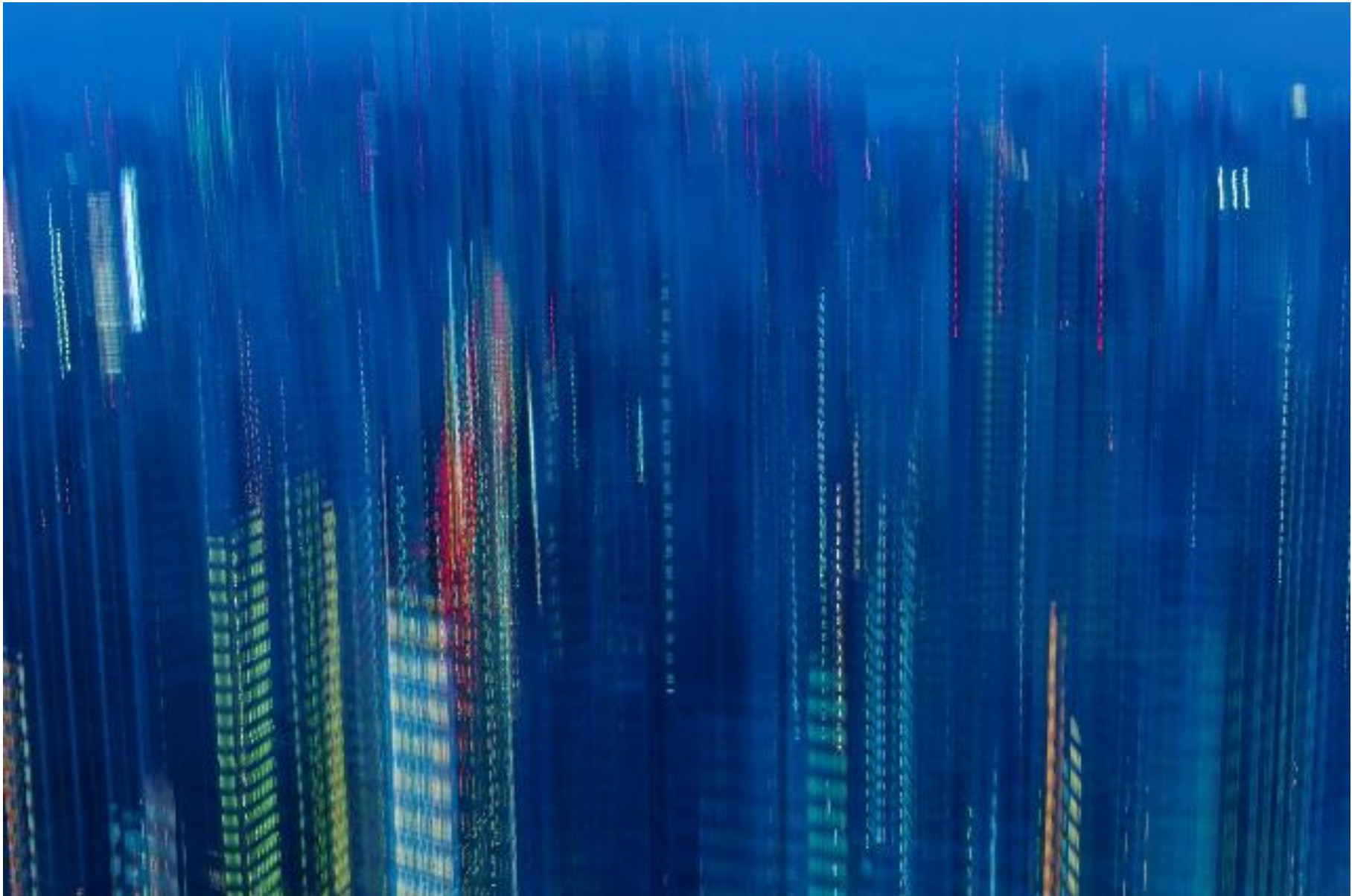
Tokyo Layers #18, digital c-print / diasec framing, 2011, Ed.10

60x90cm = EUR 2,500 | 100x150cm = EUR 3,900



Tokyo Layers #19, digital c-print / diasec framing, 2011, Ed.10

60x90cm = EUR 2,500 | 100x150cm = EUR 3,900



Tokyo Layers #22, digital c-print / diasec framing, 2012, Ed.10

60x90cm = EUR 2,500 | 100x150cm = EUR 3,900



Tokyo Layers #28, digital c-print / diasec framing, 2012, Ed.10

60x90cm = EUR 2,500 | 100x150cm = EUR 3,900



Tokyo Layers #29, digital c-print / diasec framing, 2012, Ed.10

60x90cm = EUR 2,500 | 100x150cm = EUR 3,900

Makoto Sasaki (佐々木睦)



1971 Born in Yubari-shi, Hokkaido, Japan.

1994 Graduated Osaka University of Foreign Studies (majored in Arabic language).

Solo Exhibitions

2013 “Shanghai Layers”, Frantic Gallery, Tokyo

2012 “Tokyo Layers”, Frantic Gallery, Tokyo

“Tokyo Layers”, Kaigandori Gallery CASO, Osaka

2010 “Makoto Sasaki Solo Show”, Buoys, Yokohama

“Divided Darkness”, Hibiya Patio, Tokyo

“The Leaves in New York”, RA・KU・RA, Tokyo

“Divided Darkness”, Bunkamura Gallery +, Tokyo

Group Exhibition

2011 “Shibuya Style Voi.5”, Seibu Shibuya Art Gallery & Alternative Space, Tokyo

“Young Artists Japan Vol.4”, La Foret Museum Roppongi, Tokyo

“Getty Images Japan "Click! Real Japan"”, Emon Photo Gallery, Tokyo

“The International Artists At Home & Abroad exhibition series”, Broadway Gellary NYC, New York

2010 “Chianciano International Award for Digital and Photographic Art 2010”, Art Museum of

Chianciano Terme, Siena, Italy

“Tagboat Award”, Turner Gallery Tokyo

2009 Florence Biennale 2009, Florence, Italy

“Tagboat Autumn Award 2009”, Tokyo Kotsu Kaikan, Tokyo

“Tagboat Summer Award 2009”, Art Complex Hall, Tokyo

2008 “Altered States of Reality”, Agora Gallery, New York

Awards

2011 Young Artists Japan Vol.4, The Jury's Special Award, Kentaro Totsuka Award

2011 Getty Images Japan "Click! Real Japan" 3rd place

2009 Tagboat Autumn Award 2009, The Jury's Special Award , Tsutomu Ikeuchi Award

Bibliography

Catalog:

2009 Florence Biennale 2009

Magazine:

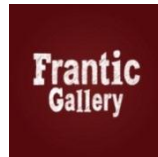
2010 Commercial Photo 2010/4 "exhibition preview" (Genkosha)

Frantic Gallery

Adress: IID116, 2-4-5 Ikejiri, Setagaya, Tokyo, Japan 154-0001

URL: www.frantic.jp

Enquiries: info@frantic.jp



www.frantic.jp



www.entomorodia.com